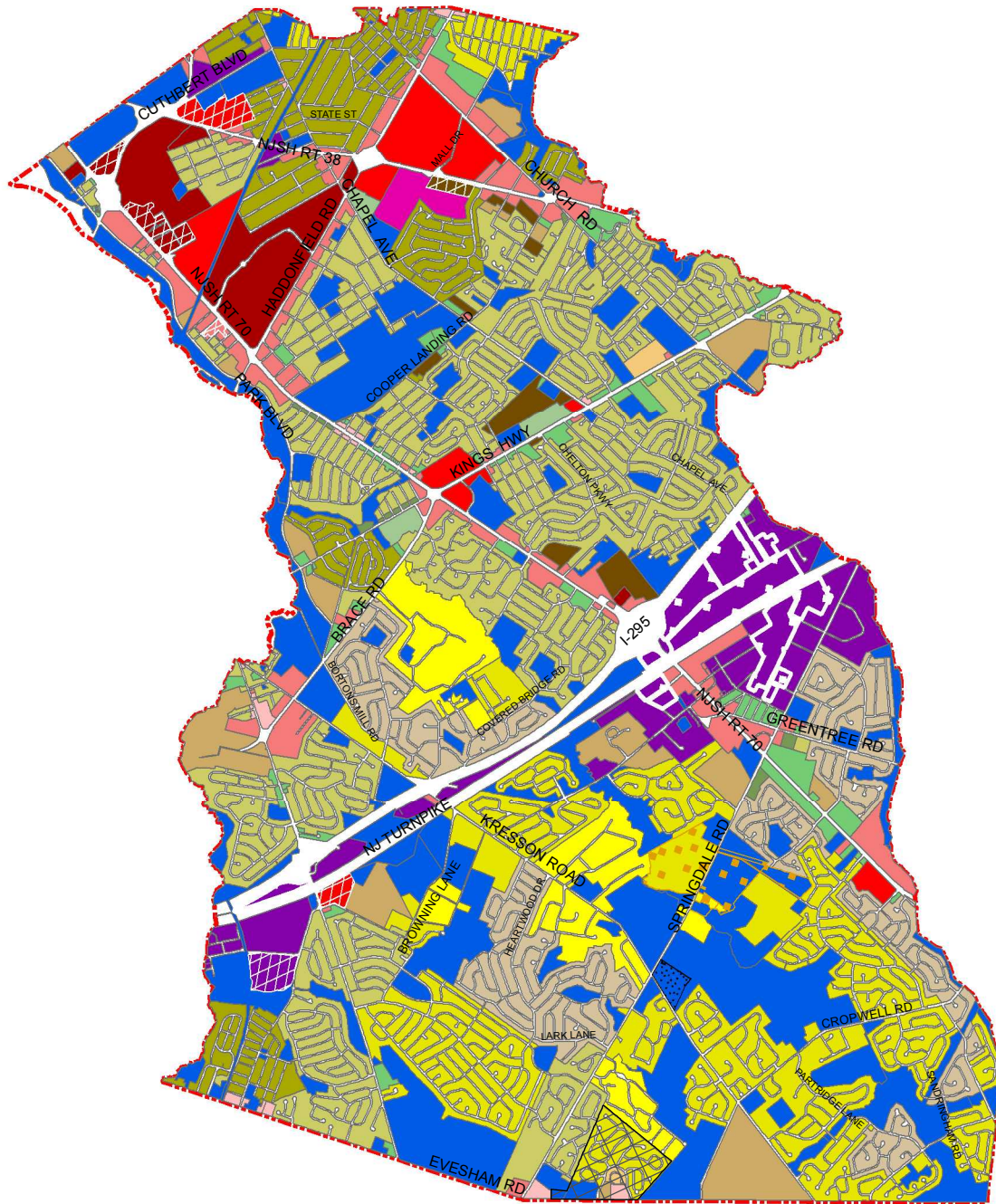




# ZONING MAP 2007

## Township of Cherry Hill

REDEVELOPMENT AREAS		MAP LEGEND	
KEY	NAME	Street Name selection	
1	Cherry Hill Apartments Redevelopment Area	Zone	
2	Rickshaw Redevelopment Area	RA	
3	Langston Steel Redevelopment Area	R1	
4	Route 38 (Area No. 2)	R2	
5	I 295 Redevelopment Area (Area No. 3)	R3	
6	Route 70 Western Gateway Phase I (Area No. 4)	R7	
7	Route 70 Western Gateway Phase II (Area No. 5)	R10	
		R20	
		RAPC	
		O1	
		O2	
		O3	
		B1	
		B2	
		B3	
		B4	
		IR	
		IRB	
		IN	
		AR-HC	
		RIPD	
		IR-RB Overlay	
		Redev Areas	
		Senior Hsg Overlay	
		Ch_Municipal Boundary	



0 0.5 1 Miles

 <p>CHERRY HILL Township <i>You couldn't pick a better place.</i></p>		<b>REVISIONS:</b> DATE: 2.5.2007	ADOPTED: O 2007-13 3.26.07 R 2007-3-8 3.12.07	<i>Department of Community Development</i> <b>DAVID J. BENEDETTI, PP, AICP</b> License No. 3683 P.O. Box 5002 Cherry Hill, New Jersey 08034
		<b>ORIGINAL:</b> DATE: 10.27.2006	ADOPTED: O 2006-23 12.11.06	<small>SOURCE: Cherry Hill Township Tax Maps by T &amp; M Associates          1256 North Church Street, Suite 3          Moorestown, NJ 08057</small>